

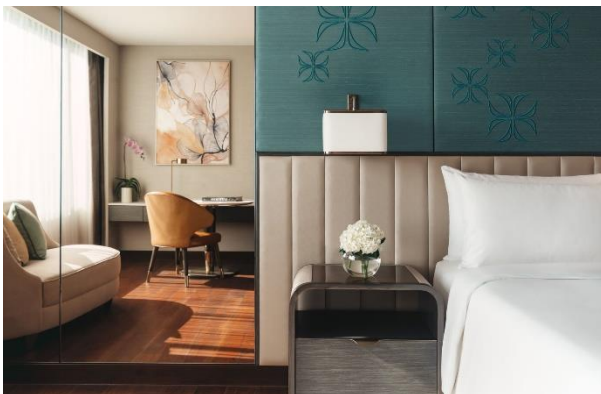
HOTEL INTERCONTINENTAL BANGKOK

971, 973 Phloen Chit Road, Lumpini, Pathum
Wan, Bangkok 10330, Thailand.

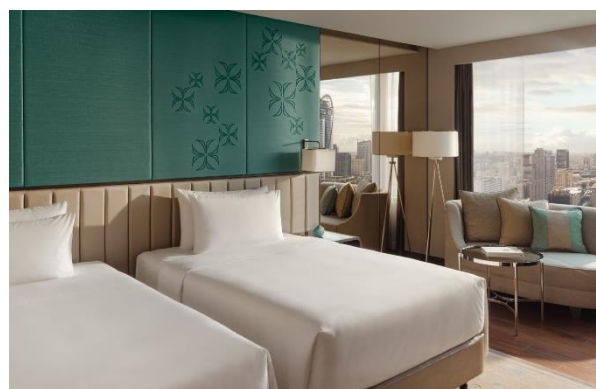


Experience luxury and elegance at its finest at the Hotel Intercontinental in Bangkok, Thailand. Nestled in the heart of this vibrant city, hotel boasts breath-taking views of the bustling metropolis and the serene Chao Phraya River. With world-class amenities, impeccable service, and sumptuous dining options, your stay promises to be an unforgettable blend of modern comfort and Thai hospitality. The Hotel Intercontinental is your gateway to a truly remarkable Bangkok experience.

The Rooms



Classis Room



Classic Twin Room

Delegates at Hotel Intercontinental can expect a truly luxurious experience with sizes starting at 45 sqm, offer a serene retreat, complete with a pillow menu for personalized comfort. Stay connected with a 46-inch flat screen LED TV and enjoy the convenience of an en-suite bathroom with a rain shower and bathtub. Stay refreshed with daily replenished coffee and tea sachets and catch up on news with a complimentary English language newspaper. For wellness enthusiasts, 24-hour Infinity Fitness center on the 36th floor provides stunning city skyline views, over 400 sqm of workout space.

Near by attractions

Downtown location is within walking distance of major shopping and dining venues. You can also take the modern BTS Skytrain adjacent to the hotel, to visit cultural landmarks such as The Royal Grand Palace, Wat Pho and Wat Phra Kaew.

